



Ahoy Skippers,

With the inaugural

SBSC Navigational Challenge 2026

less than 3 weeks away, it's time to register for this highlight in the SBSC's racing calendar. Get your crew onboard, brush up on your navigational skills, stock up on provisions and be ready to release the dock lines.

The SBSC Navigational Challenge is an all-day on-water sailing regatta in the southern parts of Port Phillip Bay through the West Channel. Competitors have the option to sail the course clockwise or anticlockwise taking wind and tide into account. Winners will be determined for PHS, ORC and AMS handicap. Boats are required to meet AS Cat. 5 standards.

Date: Sunday, 29th March 2026

Start Time: 10:00h (first warning signal at 09:55h)

Registration: <https://app.sailsys.com.au/club/108/profile?tab=entry>

www.sbsc.net/au go to: On Water/Keelboats/Results & Start Sheets

Please note clause 23.3 of the SI's specific to the Navigational Challenge Race.

We have invited boats from MYC and BYS to join us for good company and camaraderie on the water.

Don't leave registration to the last minute.





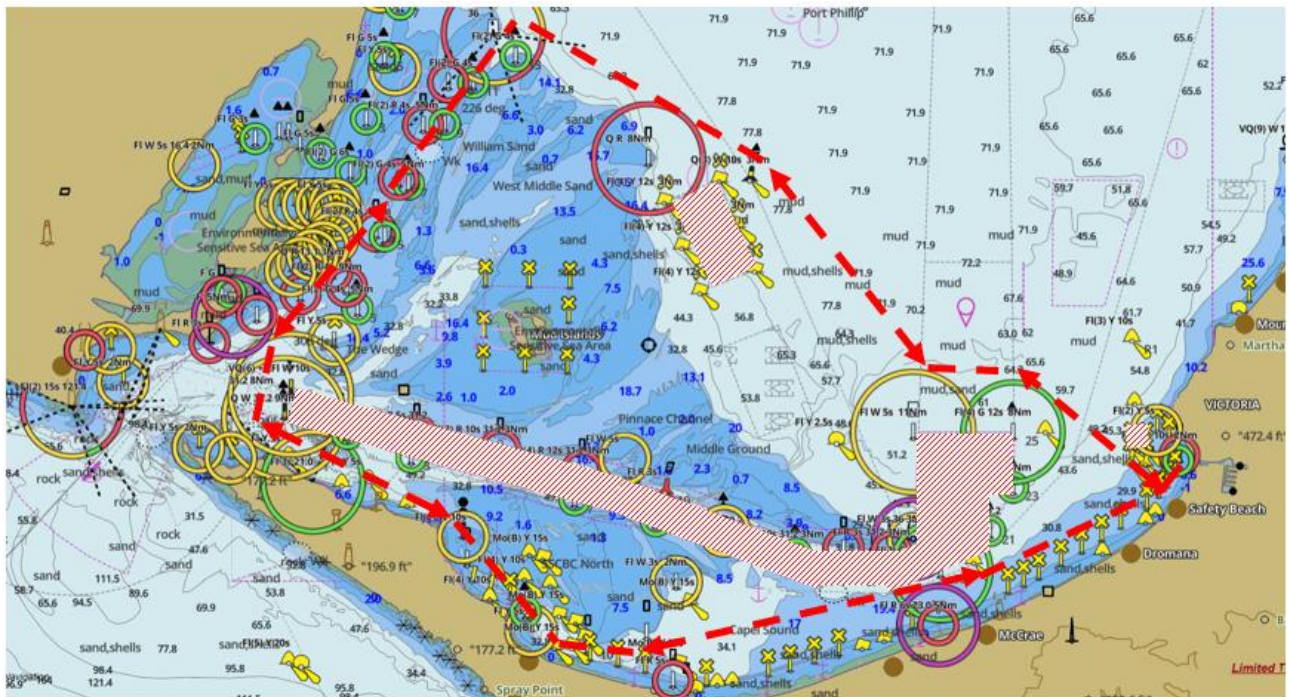
APPENDIX 1 COURSE

Please note:

- 1) The courses are written for Tower Starts. For Water Starts please refer to SI 8.3 where a laid first mark is used in lieu of the Yellow Pile (YP).
- 2) Courses are categorised as follows:

COURSE	DESCRIPTION	DETAILS	NM
GROUP 4: LONG DISTANCE (LONG)			
32	Long Distance #4 “SBSC Navigational Challenge”	<p>Competitors can choose to sail course 32 clockwise or anticlockwise:</p> <ol style="list-style-type: none"> 1) Clockwise direction: Start, YP(S), CH23(S), CH21(S), SB2(S), CH19(S), SorCH10(S), SorCH02(S), CH01(S), W-Channel No01(S), W-Channel No13(S), CH25(S),YP(P), Finish 2) Anti-clockwise direction: Start, YP(S), CH25(P), W-Channel No13(P), W-Channel No01(P), CH01(P), SorCH02(P), SorCH10(P), CH19(P), SB2(P), CH21(P), CH23(P), YP(P), Finish <p>Note: Time Limit shall be 8 hours unless changed in accordance with SI 14.2</p>	35.5

COURSE DIAGRAM SBSC Navigational Challenge 2026



Event Exclusion Zones (South Channel + Mussel Spat Culture Farms)



Proposed course (indicative)